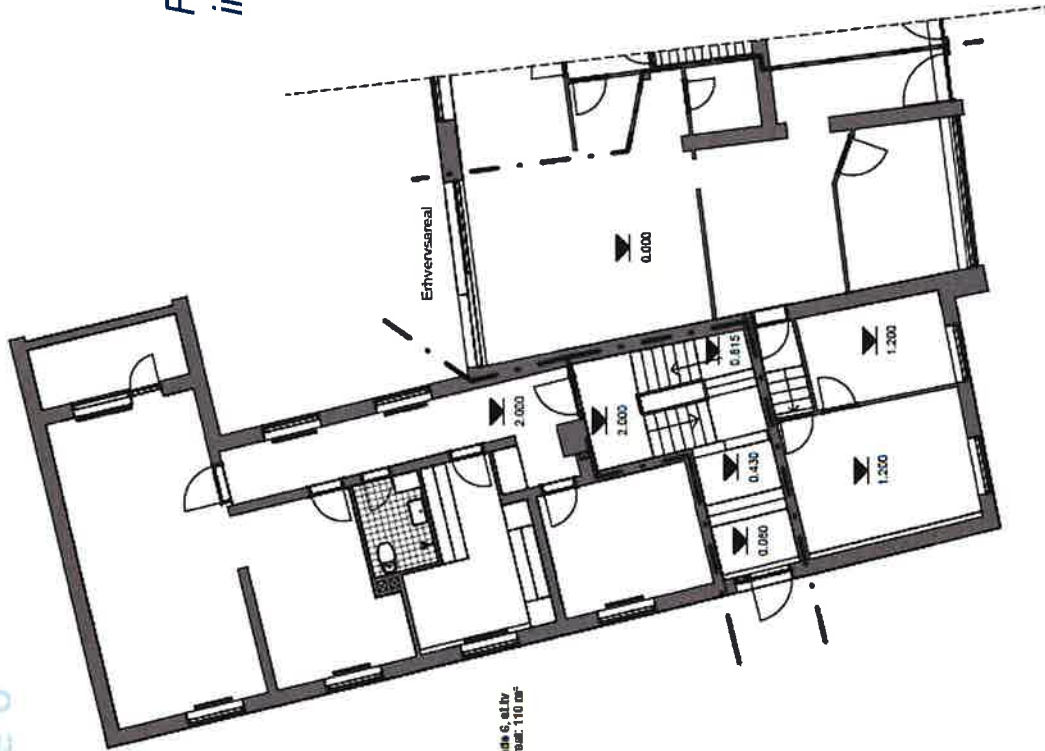


HELHEDSPANEN FOR RENOVERING AF AFDELINGEN

# Tegninger

## Østergade 6 (stuen)

Eksisterende  
indretning



Fremtidig  
indretning



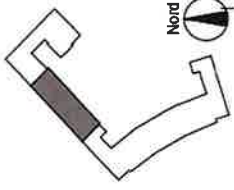


# Tegninger

## Østergade 8 & 10 (stuen)

*Eksisterende  
indretning*

*Fremtidig  
indretning*

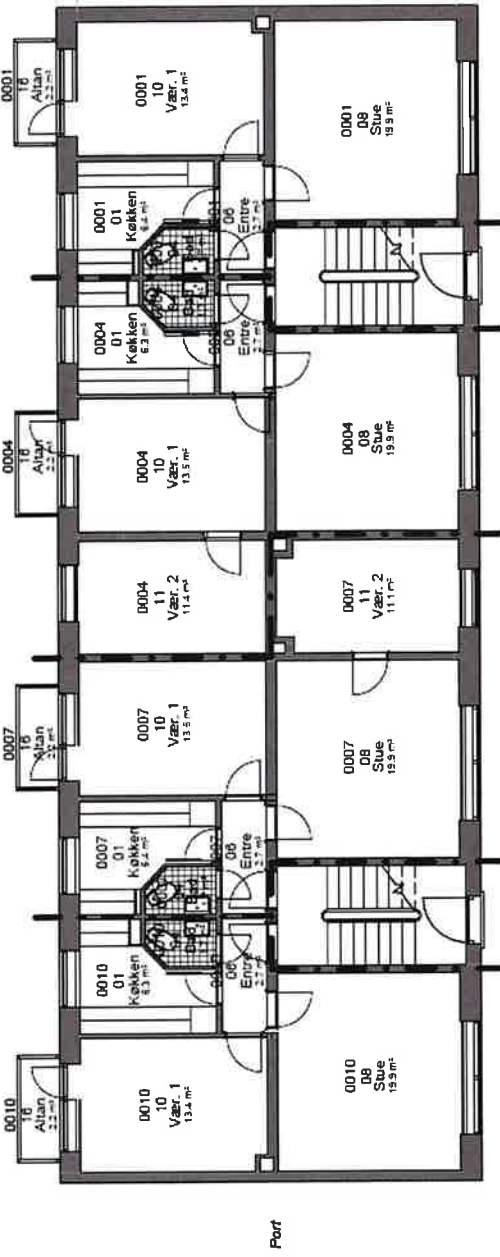


Østergade 8, st.th  
Bolig areal: 61 m<sup>2</sup>

Østergade 8, st.tv  
Bolig areal: 73 m<sup>2</sup>

Østergade 10, st.th  
Bolig areal: 73 m<sup>2</sup>

Østergade 10, st.tv  
Bolig areal: 62 m<sup>2</sup>

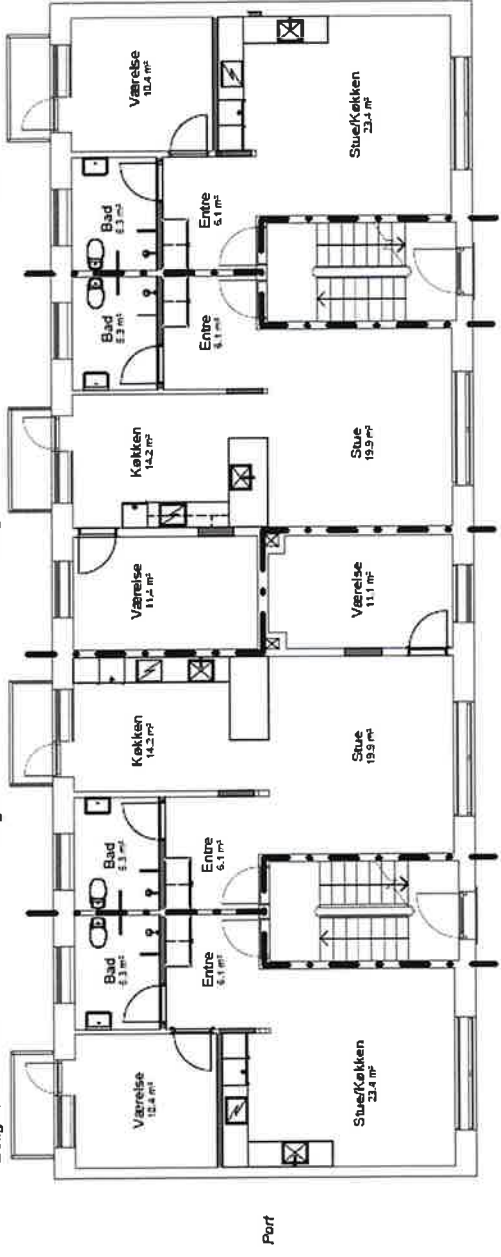


NY  
Østergade 8, st.th  
Bolig areal: 61 m<sup>2</sup>

NY  
Østergade 8, st.tv  
Bolig areal: 73 m<sup>2</sup>

NY  
Østergade 10, st.th  
Bolig areal: 73 m<sup>2</sup>

NY  
Østergade 10, st.tv  
Bolig areal: 62 m<sup>2</sup>



# Tegninger

Østergade 8 & 10  
(1. & 2. sal)

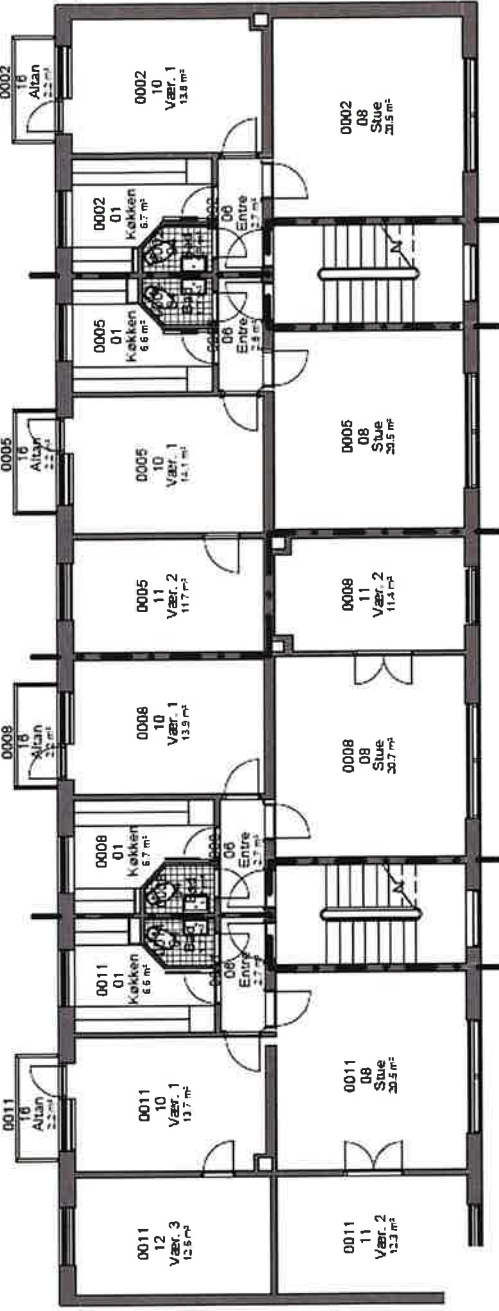
Eksisterende  
indretning

Østergade 8, 1. & 2., th  
Bolg areal: 61 m<sup>2</sup>

Østergade 8, 1. & 2., tv  
Bolg areal: 73 m<sup>2</sup>

Østergade 10, 1. & 2., th  
Bolg areal: 73 m<sup>2</sup>

Østergade 10, 1. & 2., tv  
Bolg areal: 88 m<sup>2</sup>



NY  
Østergade 8, 1. & 2., th  
Bolg areal: 61 m<sup>2</sup>

NY  
Østergade 8, 1. & 2., tv  
Bolg areal: 73 m<sup>2</sup>

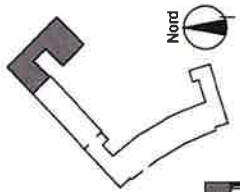
NY  
Østergade 10, 1. & 2., th  
Bolg areal: 73 m<sup>2</sup>

NY  
Østergade 10, 1. & 2., tv  
Bolg areal: 88 m<sup>2</sup>



Fremtidig  
indretning



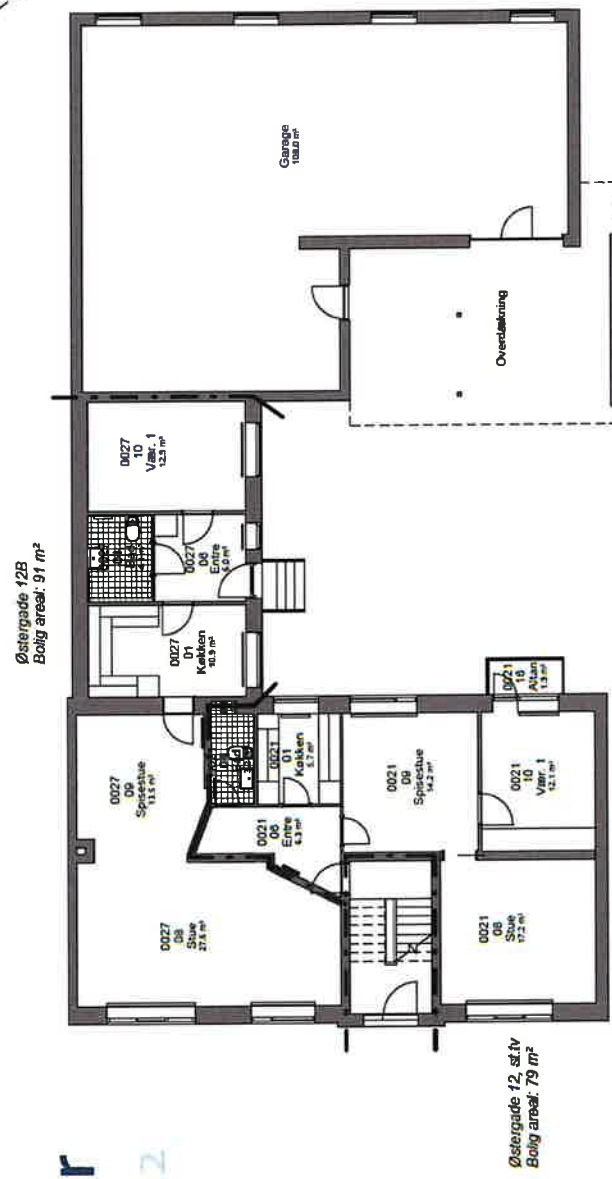


HELHEDSPLANEN FOR RENOVERING AF AFDELINGEN

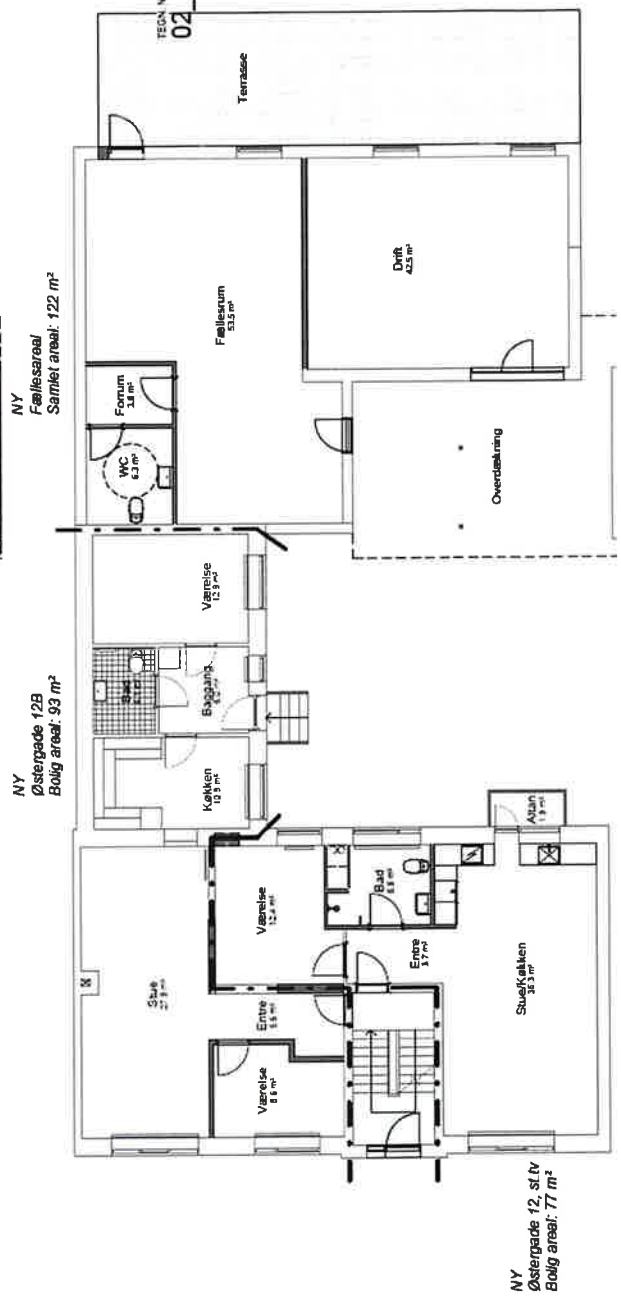
# Tegninger

## Østergade 12 (stuen)

*Eksisterende indretning*



*Fremtidig indretning*



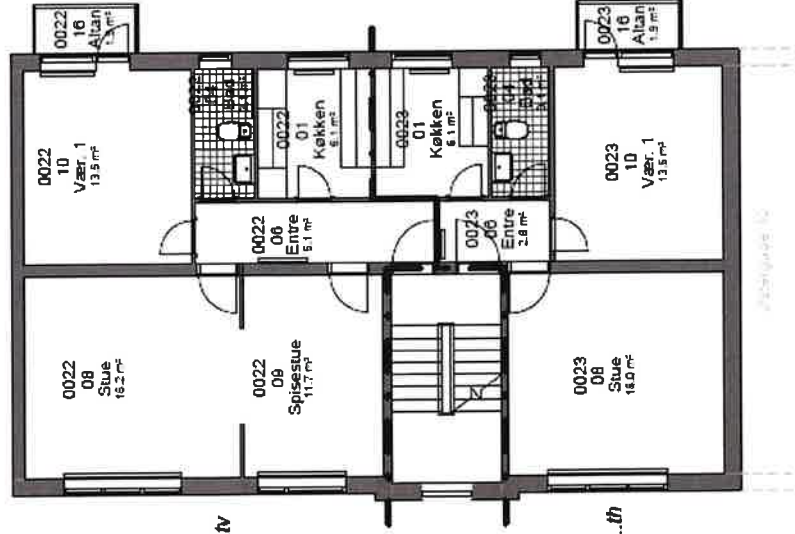
# Tegninger

## Østergade 12 (1. & 2. sal)

### Eksisterende indretning

Østergade 12, 1 & 2.tv  
Bolig areal: 74 m<sup>2</sup>

Østergade 12, 1 & 2.th  
Bolig areal: 60 m<sup>2</sup>

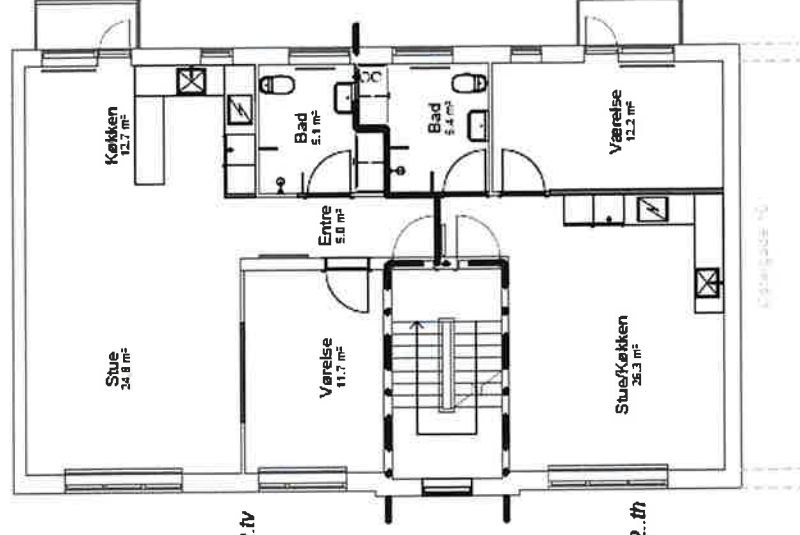


Eks. 1. & 2.sal

### Fremtidig indretning

NY Østergade 12, 1 & 2.tv  
Bolig areal: 74 m<sup>2</sup>

NY Østergade 12, 1 & 2.th  
Bolig areal: 60 m<sup>2</sup>



Ny 1. & 2.sal

